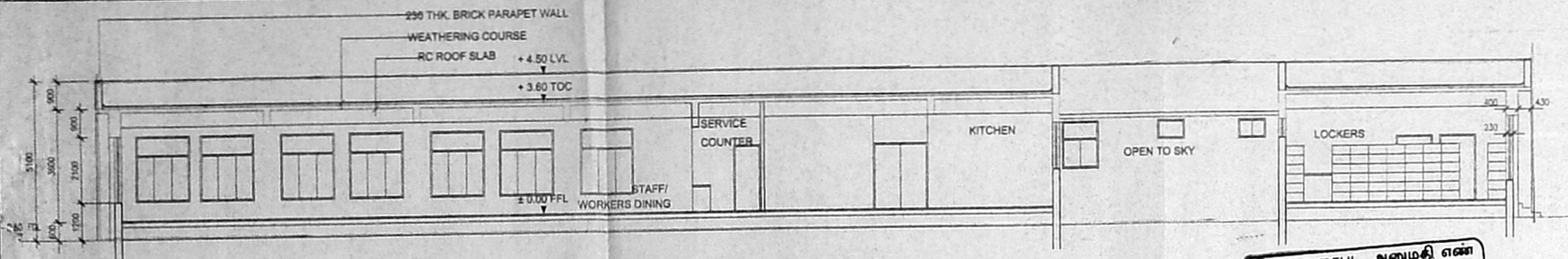


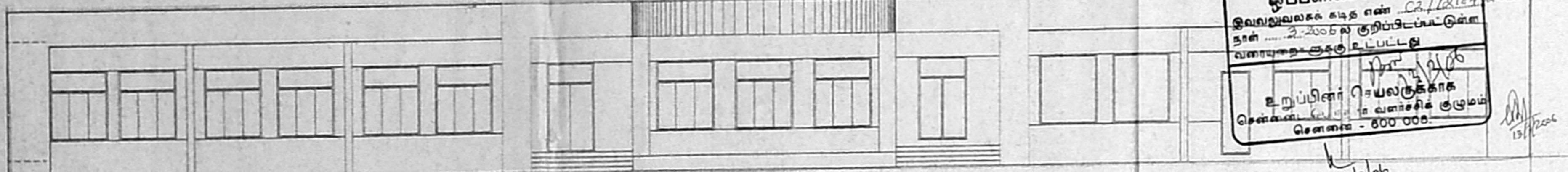




செ. பெ. வ. கு. (பி) / 12/184/2005  
 த. எண் 62/12/184/2005  
 உதவியாளர்  
 சார்ந்ததரப்படி  
 தி. உ.  
 உ.தி.சி. 13/3/06



SECTION '1 1'

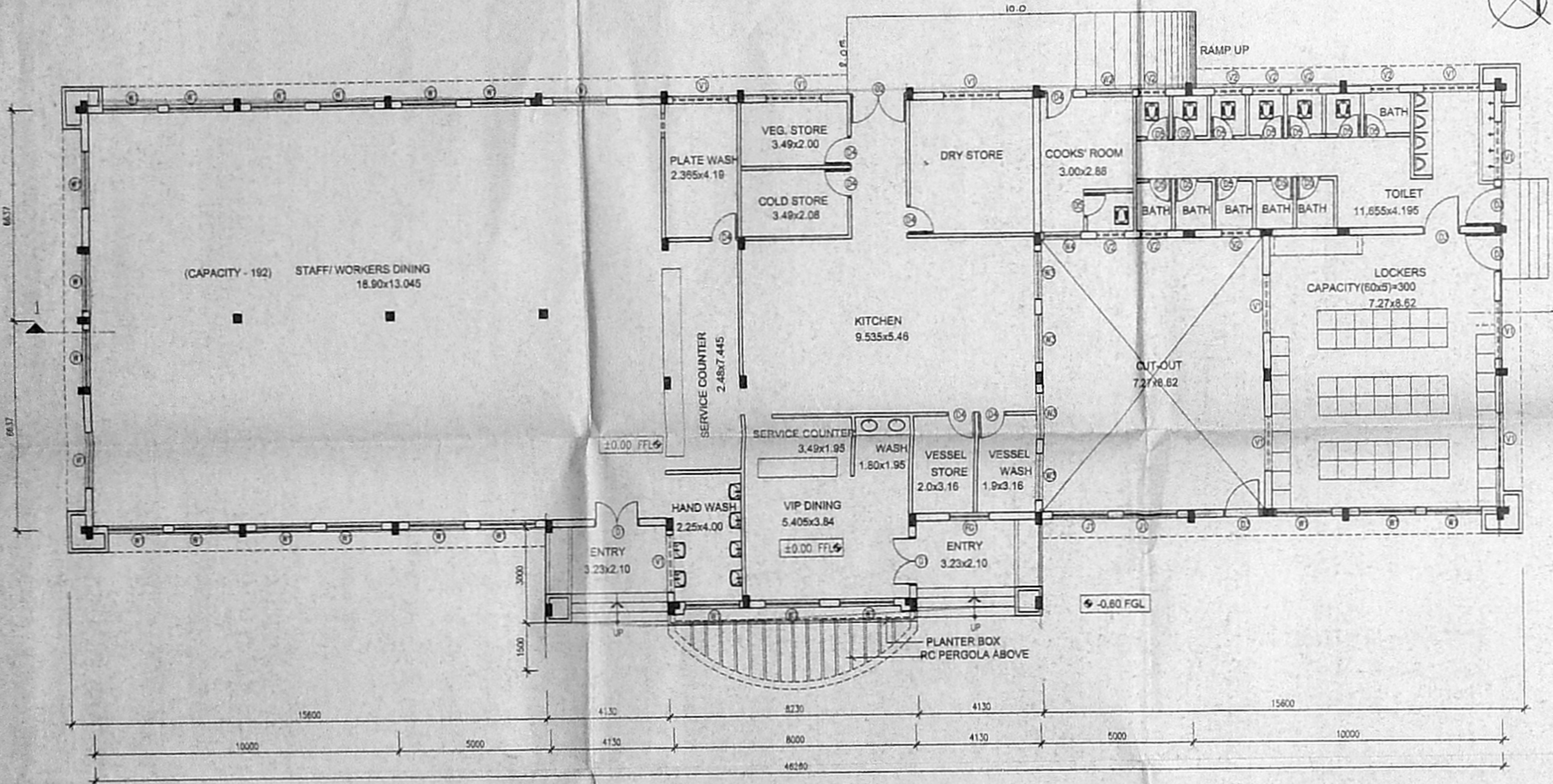


ELEVATION - A

திட்ட வரைபட அனுமதி எண்  
 1416/12/184/2005  
 ஒப்பளிக்கப்பட்டது  
 இவ்வடிவிலக்க கட்ட எண் 62/12/184/2005  
 நாள் 22.2005 ல் குறிப்பிடப்பட்டிருக்கின்ற  
 வரைபடங்களுக்கு உட்பட்டது  
 உறுப்பினர் செயலகத்திற்கு  
 சென்னை-17, ரவணசிக் குழுமம்  
 சென்னை - 600 008

MATERIAL SPECIFICATION :

- STRUCTURE : R.C. STRUCTURE
- WALLS : 230mm THK. BRICK WALL IN C.M. 1:6 AND 115mm THK. BRICK WALLS IN C.M. 1:4 ALL STEPS SHALL BE OF BRICK WORK C.M. 1:6.
- PLASTERING : INTERNAL PLASTERING OF 12mm THK. TO ALL INTERNAL BRICK WALL SURFACES IN C.M. 1:5 EXTERNAL PLASTERING OF 18mm THK. TO ALL EXTERNAL BRICK WALL SURFACES IN C.M. 1:4 CEILING PLASTERING OF 8mm THK. IN C.M. 1:3.
- PAINTING : INTERNAL WALL SURFACES OF VIP DINING SHALL BE FINISHED WITH TWO COATS OF ACRYLIC EMULSION PAINT OVER A COAT OF PRIMER. INTERNAL WALL SURFACES OF STAFF DINING SHALL BE PAINTED WITH TWO COATS OF OIL BOUND DISTEMPER OVER A COAT OF PRIMER. ALL OTHER INTERNAL WALL SURFACES SHALL BE PAINTED WITH TWO COATS OF CEMENT PAINT OVER A COAT OF PRIMER. ROUGH CAST PLASTER ON EXTERIOR WALL SURFACES AS SHOWN IN THE ELEVATION ALL OTHER EXTERNAL SURFACES SHALL BE PAINTED WITH TWO COATS OF WATER-PROOF CEMENT PAINT OVER A COAT OF PRIMER. ALL CEILING SURFACES SHALL BE PAINTED WITH TWO COATS OF WHITE WASH.
- FLOORING : VIP DINING AREA SHALL BE FINISHED WITH 600 X 600mm VITRIFIED TILE FLOORING OVER 20mm MORTAR BED IN C.M. 1:3. ALL WASH AREAS SHALL BE FINISHED WITH 300 X 300mm CERAMIC TILE FLOORING OVER 20mm MORTAR BED IN C.M. 1:3. KITCHEN, STAFF DINING AREA AND LOCKERS SHALL BE FINISHED WITH 580 X 580mm KOTAH STONE SLAB FLOORING OVER 20mm MORTAR BED IN C.M. 1:3.
- DADO : 200 X 300mm CERAMIC TILE DADO UPTO 2100mm IN KITCHEN, PLATE AND VESSEL WASH, 1500mm IN BATH AND GENERAL TOILET AREAS AND 900mm HT. IN WC AREAS AND FOR 600mm HT. ABOVE WASH BASIN.
- SKIRTING : 100mm HIGH SKIRTING IN ALL OTHER AREAS WITH RESPECTIVE FLOOR FINISHES.
- JOINERY : DOORS SHALL BE ALUMINIUM FRAMED PANELLED DOOR WITH PRE-LAMINATED PARTICLE BOARD SHUTTERS. ALUMINIUM FRAMED GLAZED SLIDING WINDOWS ALUMINIUM FRAMED TOP-HUNG VENTILATORS.
- RAIN WATER PIPE : 110mm DIA PVC RAIN WATER DOWN TAKE PIPE
- WATERPROOFING : CEMENT BASED WATER PROOFING IN 1 IN 120 SLOPE FINISHED WITH TILE LIKE THREAD MARKING OVER THE CEMENT FINISH.



GROUND FLOOR PLAN

SCHEDULE OF OPENINGS

TYPE	OPENING SIZE		TOTAL NOS	DESCRIPTION
	WIDTH	HEIGHT		
D1	1500	2700	2	ALUMINIUM FRAMED FULLY GLAZED DOOR OF 2 EQ SHUTTERS WITH FIXED GLAZING ON THE TOP
D2	1800	2100	1	ALUMINIUM FRAMED PANEL DOOR OF DOUBLE SHUTTER
D3	1200	2100	4	ALUMINIUM FRAMED PANEL DOOR OF SINGLE SHUTTER
D4	900	2100	7	ALUMINIUM FRAMED PANEL DOOR OF SINGLE SHUTTER
D5	750	2100	13	ALUMINIUM FRAMED PANEL DOOR OF SINGLE SHUTTER
W1	1800	2100	22	ALUMINIUM FRAMED GLAZED SLIDING WINDOW WITH FIXED GLAZING
W2	1500	2100	1	ALUMINIUM FRAMED GLAZED SLIDING WINDOW
W3	1500	1500	4	ALUMINIUM FRAMED GLAZED SLIDING WINDOW
W4	1200	1500	1	ALUMINIUM FRAMED GLAZED SLIDING WINDOW
FG1	1500	2550	1	ALUMINIUM FRAMED FIXED GLAZING
V1	1800	600	10	ALUMINIUM FRAMED GLAZED TOP-HUNG VENTILATOR
V2	900	600	8	ALUMINIUM FRAMED GLAZED TOP-HUNG VENTILATOR

PLAN SHOWING THE PROPOSED INDUSTRIAL BUILDING IN S.N: 181/2D2, 8, 11, 12, 182/3B, 4, 5A, 6A, 7, 8, 9A, 10A, 11B, 12, 13, 14, 15A, 16A, 17A & 18 OF CHEMBARAMBAKKAM VILLAGE.

COLOUR INDEX

PROPOSED	
ROAD	
BOUNDARY	

For L&T-DEMAQ PLASTICS MACHINERY LIMITED  
 (N.S. SRIRAMAN)  
 CHIEF EXECUTIVE

S. ATHIYAN, B.E.  
 CHAR. ERD ENGINEER,  
 Class I. L. Ceased Surveyor-No. 199  
 Corporation of Chennai  
 6, Nethamuni Street, T. Nagar  
 Chennai-17. Ph: 28156824  
 Mobile: 31058440

OWNER LICENSED SURVEYOR

TITLE: CANTEN AND CLOAK ROOM  
 CLIENT: L&T DEMAG  
 PROJECT: FACILITIES COMPLEX AT CHEMBARAMBAKKAM  
 AREA STATEMENT:  
 TOTAL BUILT-UP AREA = 588.00 SQM.  
 NOTES:  
 1. ALL DIMENSIONS ARE IN MILLIMETRES & LEVELS ARE IN METRES.

SCALE: 1:100  
 PROJECTION:

SHEET No. 2/3